

Charles Dickens'

A Christmas Carol

Adapted for the stage by Geoff Elliott

Directed by Julia Rodriguez-Elliott and Geoff Elliott

December 2–23, 2021



STUDY GUIDES FROM **A NOISE WITHIN**

A rich resource for teachers of English, reading, arts, and drama education.

Dear Reader,

We're delighted you're interested in our study guides, designed to provide a full range of information on our plays to teachers of all grade levels.

A Noise Within's study guides include:

- General information about the play (characters, synopsis, timeline, and more)
- Playwright biography and literary analysis
- Historical content of the play
- Scholarly articles
- Production information (costumes, lights, direction, etc.)
- Suggested classroom activities
- Related resources (videos, books, etc.)
- Discussion themes
- Background on verse and prose (for Shakespeare's plays)

Our study guides allow you to review and share information with students to enhance both lesson plans and pupils' theatrical experience and appreciation. They are designed to let you extrapolate articles and other information that best align with your own curricula and pedagogic goals.

More information? It would be our pleasure. We're here to make your students' learning experience as rewarding and memorable as it can be!

All the best,

Alicia Green
DIRECTOR OF EDUCATION



Pictured: Trisha Miller, *Argonautika* 2019, PHOTO BY CRAIG SCHWARTZ.

TABLE OF CONTENTS

Character Map	4
Synopsis	5
Quotes from <i>A Christmas Carol</i>	6
About the Author Charles Dickens	7
Dickensian Timeline: Important Events in Dickens' Life and Around the World	9
Dickens' Times: Victorian London	10
Poverty: Life & Death	13
Currency & Wealth	17
About: Scenic Design	19
About: Costume Design	20
<i>A Christmas Carol</i> : Overall Design Concept	21
Essay Topics & Discussion Points.....	22
Additional Resources	24
About Theatre Arts.....	25
About A Noise Within.....	26

A NOISE WITHIN'S EDUCATION PROGRAMS MADE POSSIBLE IN PART BY:

Ann Peppers Foundation	The Green Foundation
Capital Group Companies	Kenneth T. and
Michael J. Connell Foundation	Eileen L. Norris Foundation
The Dick and Sally Roberts	Ralph M. Parsons Foundation
Coyote Foundation	Steinmetz Foundation
The Jewish Community	Dwight Stuart Youth Fund
Foundation	

Special thanks to our Dinner On Stage donors who kept the arts thriving this year by supporting our Student Matinees (SMATs):

SMAT PERFORMANCE SPONSOR (\$5,000 AND ABOVE)

Richard Green	Barbara Lawrence
Jeanie & Terry Kay	Terri Murray
William & Priscilla Kennedy	Richard & Sally Roberts
Sheila & Alan Lamson	

SCHOOL SPONSOR (\$2,500 AND ABOVE)

Bill & Clarie Bogaard	Julie & Lance Markowitz
Kathleen &	Bruce & Valerie Merritt
James Drummy	Lyn Spector
Sheila Grether-Marion &	Lois Tandy
Mark Marion	Liz & Rhodes Trussell
Barbara Henderson	

CLASS SPONSOR (\$1,000 AND ABOVE)

Molly Bachmann	Eugene Kapaloski
Meg Huntington Cajero	Thomas & Gloria Lang
Jack & Becky Doody	Jay Lesiger
Fred & Sandy Engler	Cynthia Nunes &
Armando Gonzalez	Barbara Nye
Diane Grohulski	Diana Peterson-More
Schuyler &	Gail Samuel &
Deborah Hollingsworth	William Christian
Robert & Jennifer Israel	Margaret Sedenquist
Denise Jay	Tribune Direct
Miranda Johnson-Haddad	Vickie Taylor
Molly Joseph	

WORKSHOP SPONSOR (\$500 AND ABOVE)

Robert Cathcart	Elyse Klein
Cecilia Center	Bob Low, in honor of wife
John Cushman	Anni Frandsen Low,
Julie Daniels	Ph.D.
Patrick Garcia	Alan Miller
Sandra Greenstein	Julia Rodriguez-Elliott
Selma Holo & Fred Croton	Janet Samuel
David Holtz	Deborah Strang
Forsight Creations	Donna Tucker, in memory
Jim Kelly	of Beverly Parks Tucker
Arthur J. Gallagher & Co.	Loretta Vigil
Jason King	Marianne Wallace
	David & Julia Zuckerman

BUS SPONSOR (\$350 AND ABOVE)

Wendy Alden	Allan Mohrman
Anonymous	Scott Myers
Julie Fox Blackshaw	Norma Richman
Mary Hacker	Edmund Roberts
Ilona Linden	Daniel Rothmuller
Nancy Macky	Chromatic
Joan Mills	Interactive Media

ADDITIONAL DONORS

Jerry Gallagher &	Jan Sanders
Gerard Clarke	Linda Saurenman
Margaret Grossman	Stuart Semigran
Margaret Koch	Angela Conner &
Irene Lacher	Kevin Speaks
Mark Nelson	Sallie Strang

CHARACTER MAP



CHRISTMAS PAST



CHRISTMAS PRESENT



CHRISTMAS YET
TO COME



EBENEZER SCROOGE

The protagonist: a bitter old creditor who does not believe in the spirit of Christmas, nor does he possess any sympathy for the poor.



JACOB MARLEY

"Dead to begin with."

Ebenezer Scrooge's former business partner, who died seven years prior. His ghost appears before Scrooge on Christmas Eve to warn of him of the Three Spirits, and urges him to choose a new path in life.

GHOST OF CHRISTMAS PRESENT

A lively spirit who spreads Christmas cheer.

GHOST OF CHRISTMAS YET TO COME

Scrooge fears this ghost's premonitions.

GHOST OF CHRISTMAS PAST

Invokes images from Scrooge's past to serve as a reminder that Christmas once meant something to him.

FRED

Scrooge's optimistic, kind-hearted nephew; he overlooks Scrooge's negativity.

OLD JOE, MRS. DILBER, LAUNDRESS, AND UNDERTAKER'S MAN

In the future, they meet to share in the profits of selling-off Scrooge's belongings.

MR. & MRS. FEZZIWIG

Mr. Fezziwig was Scrooge and Marley's former boss at the warehouse. A generous man who held Christmas parties for his staff every year.

BOB CRATCHIT

Scrooge's overworked and underpaid clerk. Although he and his family struggle for money, they carry on and look towards the future.

OTHERS:

NARRATOR

Kindly provides story information to you, our spectators.

BELLE

Scrooge's former fiancée; he chose greed over love.

MRS. CRATCHIT

Bob's wife.

TINY TIM

Bob's youngest son; equipped with a loving spirit.

GENTLEPEOPLE, CAROLERS, PARTY GUESTS, SERVANTS, ETC.

FAN

Scrooge's older sister and Fred's mother.

PETER, MARTHA, BELINDA, & THE LITTLE CRATCHITS

Other Cratchit children.



SYNOPSIS

A CHRISTMAS CAROL

By Charles Dickens

Adapted for the stage by Geoff Elliott

ON A FRIGID Christmas Eve, a miserly old man named **Ebenezer Scrooge** sits in his counting house, keeping an eye on his clerk, **Bob Cratchit**. The stingy Scrooge refuses to spend money on heating coals, so poor Cratchit shivers in the dim room. Scrooge's nephew, **Fred**, drops by and wishes him a Merry Christmas, though Scrooge replies with a bitter "Bah! Humbug!" Later, two gentlemen enter his office and ask him to donate money for a fund that will feed the hungry. Scrooge feels no pity for the plight of those less fortunate and promptly dismisses the gentlemen. At closing time, Scrooge reluctantly gives Cratchit the day off for Christmas.

Scrooge returns home, where he lives in a house that belonged to his deceased business partner, Jacob Marley. Late at night, the sound of dragging, metal chains announces the arrival of **The Ghost of Jacob Marley**. Marley has a grave message for Scrooge. Because Marley lived a greedy and selfish life, his ghost now wanders the Earth in heavy chains as punishment. He hopes he can help Scrooge avoid the same fate. He tells Scrooge that three spirits will visit him, with the first arriving when the bell tolls one.

As promised, the **Ghost of Christmas Past** arrives, leading

Scrooge on a journey to the Christmases of his childhood. He sees himself as a lonely child, an apprentice to **Fezziwig** the merchant, and as a young man who loses his sweetheart **Belle's** love to his greed. Tortured, Scrooge begs the ghost to take him home.

The **Ghost of Christmas Present** takes Scrooge through London to unveil the Christmas holiday as it will unfold that year. Scrooge watches the large and bustling Cratchit family prepare a miniature feast in their meager home. He discovers Bob Cratchit's crippled son, **Tiny Tim**, a courageous boy whose kindness and humility warms Scrooge's heart. The specter then whisks Scrooge to his nephew Fred's house to witness their Christmas party. Scrooge finds the jovial gathering delightful and pleads with the spirit to stay until the very end of the festivities. As the day progresses, the spirit ages, and we see a noticeably older ghost. Prior to his departure, the ghost reveals to Scrooge two starved children, **Ignorance** and **Want**, living under his coat. He vanishes instantly as Scrooge notices a dark and hooded figure approaching.

The **Ghost of Christmas Yet To Come**, the spirit Scrooge fears most of all, leads Scrooge through

a sequence of mysterious scenes relating to an unnamed man's recent death. Scrooge sees businessmen discussing the dead man's riches and some thieves pawing his personal effects for cash. Scrooge, anxious to learn the lesson of his latest visitor, begs to know the name of the dead man. After pleading with the ghost, Scrooge finds himself in a churchyard, the spirit pointing to a grave. Scrooge looks at the headstone and is shocked to read his own name. He desperately implores the spirit to alter his fate, promising to renounce his insensitive, avaricious ways and to honor the Christmas spirit. He suddenly finds himself safely tucked in his bed.

Overwhelmed with joy at the chance to redeem himself, and grateful that he has been returned to Christmas Day, Scrooge rushes out onto the street hoping to share his newfound Christmas spirit. He sends a giant Christmas turkey to the Cratchit house and attends Fred's party, to the stifled surprise of the other guests. As the years go by, he holds true to his promise and honors Christmas with all his heart: he treats Tiny Tim as if he were his own child, provides gifts to the poor, and treats his fellow human beings with kindness, generosity, and warmth. ❖

“Bah! Humbug!”

“I WILL LIVE IN THE PAST,
THE PRESENT, AND THE FUTURE!
THE SPIRITS OF ALL THREE
SHALL STRIVE WITHIN ME!”

“These
are but
shadows of
the things
that have
been...”

“GOD BLESS US,
EVERYONE!”

“**Scrooge**
was the Ogre of the
family. The mention
of his name cast a
dark shadow on the
party, which was not
dispelled for a full
five minutes.”

“Are these the
shadows of the things
that *will* be, or are
they shadows of things
that *may* be, only?”

“Merry
Christmas!”

“The Cratchit’s *were not a handsome family; they were not well dressed; their shoes were far from being waterproof; their clothes were scanty; and Peter might have known, and very likely did, the inside of a pawnbroker’s. But they were happy, grateful, and pleased with one another, and contented with the time.*”

ABOUT THE AUTHOR: **CHARLES DICKENS**



Dickens in New York, 1867, Wikipedia.

CHARLES DICKENS, English writer of novels and short stories, was the second of eight children born to John and Elizabeth Dickens in Portsmouth, England on February 7, 1812. He is one of the most famous English novelists of the Victorian Era. As a young child, Dickens spent most of his time reading; he was also quite fond of theatricals, puppet plays, and had a natural singing voice.

Due to Dickens' father's job, the family relocated several times until they settled in Camden Town, a poor neighborhood in London, where Bob Cratchit and his family dwell in *A Christmas Carol*. At the age of 12, Dickens' father was sentenced to debtor's prison, so young Charles left school and went to live with a family friend and work in a shoe-blacking factory. Dickens' family, excluding his sister Fanny, all lived at the prison. Each Sunday, Charles visited the prison and witnessed the disgusting conditions in which London's working poor were forced to live.

After several months, an unexpected inheritance relieved Dickens' father from his debt, and Charles eventually left the factory and returned to school. Still, Charles' job gluing labels on bottles traumatized him, leaving a deep impression that would haunt him for the rest of his life. These difficult times inspired Charles Dickens to include many economic and child labor issues in his fiction.

At age 15, Dickens' father met with new financial difficulties, which caused Charles to leave school and seek permanent employment. Although his formal education was limited, his enthusiasm for reading and his natural writing ability carried him far. He first worked as a clerk in a legal office, and later as a stenographer in the law courts of London.

By 1832 he became a reporter for two London newspapers. In the following year, he began to contribute a series of impressions and sketches to various publications under the pen name "Boz." The same year, Dickens began to write *The Pickwick Papers* in several monthly installments. This form of serial writing became a standard method of writing fiction in the Victorian Era. In fact, many of Dickens' successful novels, such as *Oliver Twist*, *Nicholas Nickelby*, *Great Expectations*, and *A Tale of Two Cities* began as magazine installments. In 1836, Dickens married Catherine Hogarth, the daughter of the editor of a London newspaper. Together they had ten children.

In 1842, Dickens went on a five-month long lecture tour of America, speaking out strongly for the abolition of slavery and of other reforms, during which he wrote his travelogue, *American Notes for General Circulation*.

Soon after his return to England, Dickens began to write *A Christmas Carol* (1843), the first of three stories Dickens penned about Christmas (followed by *The Chimes* (1844) and *The Cricket on the Hearth* (1845)). *A Christmas Carol* was immediately popular, but Dickens received few of the initial profits due to poor contract agreements. The next year, Dickens performed a live reading of *The Chimes*, which launched Dickens' extensive career in delivering oral interpretations. Dickens continued performing this way for charity and for pleasure for the remainder of his life, and even formed an amateur theatre company in 1848, where he served as manager, producer, and actor.

In the early 1850s, Dickens was confronted with the death of his father and one of his daughters within two weeks. Partly in response to these losses, Dickens began writing what are now known as his "dark" novels which include *Bleak House*, *Hard Times*, and *Little Dorrit*. In 1857, Dickens fell in love with an actress named Ellen Ternan, and separated from his wife, Catherine, after many years of incompatibility.

From December 1860 to August 1861, Dickens serialized the largely autobiographical *Great Expectations*. The story was published in *All the Year Round*, a periodical owned and created by Dickens.

In the 1860s, Dickens devoted much of his time and energy to public readings from his novels. Traveling grew tiresome, and a train wreck in 1865 left Dickens with

A Chronology of Dickens' Major Works

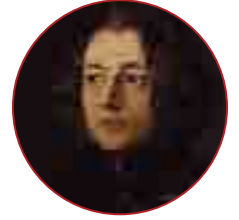
1836: <i>Pickwick Papers</i>	1848: <i>The Haunted Man</i>
1837: <i>Oliver Twist</i>	1849: <i>David Copperfield</i>
1838: <i>Nicholas Nickleby</i>	1853: <i>Bleak House</i>
1840: <i>The Old Cottage</i>	1854: <i>Hard Times</i>
1841: <i>Barnaby Rudge</i>	1855: <i>Little Dorrit</i>
1843: <i>A Christmas Carol</i>	1856: <i>Our Mutual Friends</i>
1844: <i>The Chimes</i>	1859: <i>A Tale of Two Cities</i>
1845: <i>The Cricket on the Hearth</i>	1860: <i>Great Expectations</i>
1846: <i>The Battle of Life</i>	1870: <i>The Mystery of Edwin Drood</i>
1847: <i>Dombey & Son</i>	

dizzy spells, arthritis, gout, and swelling in his left foot. Still, he carried on and performed throughout the United States and Britain.

On June 8, 1870, Dickens spent all day working on *The Mystery of Edwin Drood*, which was rare for the man who normally only wrote for a couple of hours each day. That night, Dickens complained of a toothache, and lost consciousness.

Charles Dickens died from complications of a stroke on June 9, 1870. He is buried in Westminster Abbey. ❖

Other novels by Charles Dickens that were adapted into plays produced at A Noise Within include: *Great Expectations* and *Oliver Twist*.



TIMELINE OF CHARLES DICKENS' LIFE

1807: Abolition of the British slave trade.

1812: Charles Dickens born on February 7 in Landsport, Portsmouth, England.

1822: The Dickens family settles in Camden Town, a London suburb.

1824: Charles Dickens works in Warren's Shoe Blacking Factory as a result of his family's sentence to the Marshalsea Debtor's Prison.

1825: The world's first public passenger railway opens in northeast England.

1833: Abolition of slavery in the British Empire. Charles Dickens meets future wife, Catherine Hogarth, and begins working at the *Morning Chronicle*.

1834: The Poor Law Amendment Act sets up workhouses, where the poor are sent to work off their debts. They are notorious for their poor conditions.

1836: Dickens collects his previously published stories into his first book, *Sketches by Boz*. Marries Hogarth on April 2.

1837: Queen Victoria becomes Queen at the age of 18.

1840: First postage stamps come into use. Only approximately 20% of children in London receive any schooling at all.

1842: The Mines Act ends child labor in underground mines. Dickens first visits America and writes *American Notes*, which criticizes slavery and upsets many.

1843: Dickens publishes *A Christmas Carol*.

1845-49: The Great Potato famine of Ireland. 800,000 people die of starvation. Large numbers of immigrants flee to Britain, Australia, Canada, and the United States.

1847: Parliament passes the Ten Hours Bill—which limits both women and children to work 10 hours per day. This bill is to be enforced in all of England by a total of four inspectors.

1848: Cholera breaks out in British towns. Seneca Falls Convention for women's rights organized in New York. *The Communist Manifesto* published in Germany.

1850: Approximately 120,000 domestic servants in London alone—most work 80-hour weeks for one halfpence per hour. Thousands of prostitutes between the ages of 15-22 at work in London.

1851: The Crystal Palace Exhibition—a fair of modern engineering and manufacturing arts.

1853: Dickens gives his first staged reading of *A Christmas Carol* before 2,000 people at a benefit for Birmingham and Midland Institute, a pioneer of adult scientific and technical education.

1861: The American Civil War begins. In Russia, following the Crimean War, the Emperor abolishes serfdom, or "enforced labor".

1865: Dickens badly injured in a train wreck. The American Civil War ends. The Thirteenth Amendment abolishes slavery in the United States.

1869: Exhaustion and illness force Dickens to return home from an English tour of *A Christmas Carol*.

1870: Charles Dickens dies from complications of a stroke on June 9.



Image credits top to bottom left to right: Dickens: <http://www.wpclipart.com>, Train: <http://workeng-lish3.blogspot.com>, Queen Victoria: <http://www.gogmsite.net>, Crystal Palace Exhibition: <http://www.john-paulcatton.com>, Farm: <http://www.irishpotatofamine.net>.

Dickens' Times: VICTORIAN LONDON

By Jessica Hutchinson



River Thames

LONDON GEOGRAPHY was determined by the **Thames**. The great river ran from west to east through the city after a dogleg north past Westminster—so, too, did the city itself, its two great thoroughfares being the Strand—Fleet Street and Oxford Street —Holborn—Cheapside.

At its core was the old **City of London**—known as “the City” as the century wore on—an entity consisting of the roughly square mile making up the area that had once been inside the old walls of the medieval city of London, bounded by the Thames on the south, the Inns of Court and Temple Bar on the west, and the Tower in the east, with its seven gates (Newgate of prison fame being one), which had all been torn down save for “that leaden-headed old obstruction,” as Dickens calls it at the beginning of *Bleak House*, “appropriate ornament for the

threshold of a leaden-headed corporation, Temple Bar.”

Within the City lay the **Royal Exchange**, (the ‘Change upon which Scrooge’s word in *A Christmas Carol* is said to be so good), which was a gathering place for merchants in different trades, and the **Bank of England**, the financial nucleus of the nation, together with the financial offices and activities that naturally clustered around them. In fact, the term “the City” was also used to denote the financial heart of England in the way that “Wall Street” is used to describe the financial heart of the United States. In Jane Austen’s day, it was still customary for some merchants to live in the City, but as railroads were thrust through it and commuting became more feasible, even poor clerks began commuting to work from fringe or suburban areas the way we are told



Royal Exchange



Bank of England



Fog in London

that Bob Cratchit does from **Camdentown**. In the first 80 years of the 19th century, in fact, the resident population in the City dropped from 128,000 to 50,000, while greater London as a whole mushroomed from 1-million to more than 4.5-million people.

The fancy area of London was the **West End**, which lay west of Temple Bar and London's center, Charing Cross. At the historic core of the West End lay what had once been the royal city of Westminster, with its palaces of **St. James** and **Whitehall**, along with **Westminster Abbey** and the **Houses of Parliament**. The Treasury building was here, along with Downing Street, the Foreign Office and the Horse Guards (army headquarters). These had now become part of the larger, expanded London, and adjacent to this nerve center of government and royalty the ultrafashionable West End residential area of Mayfair (and, later, Belgrave Square and the unfashionable Chelsea farther south) grew up. Mayfair was the location of the posh men's clubs on Pall Mall, the exclusive shops on Bond Street and the fancy houses on the ritziest residential street in the city, Park Lane, overlooking the great greensward of Hyde Park on Mayfair's western border. All were within a short distance of the new royal residence, **Buckingham Palace**. Such was London. But what was it like to live in?

The **fog** in London was very real. Just why it was the color it was no one has ever been able to ascertain for sure, but at a certain time of the year—it was worst in November—a great yellowness reigned everywhere, and lamps were lit inside even during the day. In November, December, and January the yellow fog extended out some three or four miles from the heart of the city, causing "pain in the lungs" and "uneasy sensations" in the head. It has been blamed in part on the coal stoves.

At 8:00am on an average day over London, an observer reported the **sky began to turn black** with the **smoke** from thousands of **coal fires**, presumably for morning fires to warm dining rooms and bedrooms and to cook breakfast. Ladies going to the opera at night with white shawls returned with them gray. It has been suggested that the black umbrella put in its appearance because it did not show the effects of these London atmospherics. The fog was so thick, observed a foreigner at mid-century, that you could take a man by the hand and not be able to see his face, and people literally lost their way and drowned in the Thames. In a very bad week in 1873 more than 700 people above the normal average for the period died in the city, and cattle at an exhibition suffocated to death.

There were problems underfoot as well as in the air. **100 tons of horse manure** dropped on the streets of London each day, and a report to Parliament said that "strangers coming from the country frequently describe the streets of London as smelling of dung like a stable-yard."



Crowded London smoke

Originally, many **streets were not paved**; by midcentury, however, the dust from the pulverized stone with which London streets were coated in good weather turned to mud when it rained. An etiquette book advised gentlemen to walk on the outside of the pavement when accompanying a lady to ensure that they walked on the filthiest part of it, and every major street had a crossing sweeper like Jo in *Bleak House*, who for a penny swept the street before you made your way across it on rainy days so your boots did not become impossibly filthy.

Nor was the Thames any better. **London sewage**, some 278,000 tons daily at mid-century, as well as pollutants from the factories along the river's banks, was dumped untreated into the water, presumably helping to fuel the cholera epidemics that swept the city in the early part of the century. The smell was bad enough in the summer of 1858 to cause Parliament to end its session early.

There was what we would surely call **noise pollution**, too—the incessant sound of wheels and horses' hooves clacking over the pavement, the click of women's pattens

(protective overshoes) on the sidewalks in the rain, the bell of the muffin man, and the cries of the street peddlers selling such items as dolls, matches, books, knives, eels, pens, rat poison, key rings, eggs, and china, to say nothing of the German bands, the itinerant clarinet players, and the hurdy-gurdies. The children who added their din to that of the costermongers remind us that London was an overwhelmingly young city, as we are apt to realize when we read, say, *Oliver Twist*, a city of multitudinous street arabs, young costermongers, crossing sweepers like Jo, or the mud larks who scavenged the bed of the Thames all playing in the streets or crying their wares, holding horses for gentlemen, fetching cabs for theatergoers on rainy nights, carrying packages or opening cab doors or doing cartwheels or handstands in the street in the hope of earning a ha'penny or penny. There was no compulsory school until 1880, and children under 14 made up 30 to 40 percent of the population. ❖

Source: Goodman Theatre—www.goodmantheatre.org

Poverty: Life & Death

POVERTY is one of the themes that strongly resonates with an audience member as they are watching *A Christmas Carol*. As we peer into the Cratchit family's household through the eyes of Scrooge and the Ghost of Christmas Present, we see the struggles that are all too familiar to many families living in the US, in California, and in Pasadena. In truth, poverty is a multi-faceted issue comprised of many different hardships, and we are currently seeing these topics come up in conversations in our local and national political arena, our media and, most certainly, our theatre, which compels us to ask: what is poverty, how do we see it operate in society, and what can we do to alleviate it?

In order to understand the depths of poverty, we need to first define poverty as it is currently defined by the US Department of Health and Human Services. There are two ways our federal government defines poverty: thresholds and guidelines. Thresholds are mainly utilized for statistical purposes, and vary depending on certain factors including household size and age. The poverty threshold for a family of four, for instance, is defined as having an income of \$24,563 per year. These change depending on if you have children under 18, and how many you have. You can find the various thresholds throughout the years on the Census website. Poverty guidelines are utilized for administrative purposes when determining eligibility for different social safety net programs such as SNAP, Head Start, or the National School Lunch Program.

US STATS

In the US, about 14% of our population (or about 44 million people) falls below the poverty threshold. In California the numbers stay relatively similar to the national average with a reported 14.3% of our population, or 5.5 million people, falling below this poverty threshold. The number of people in poverty in Pasadena, however, is estimated at 15.3%, or about 21,000 people. While we can certainly state what the statistics are, we also need to separate the numbers from what they represent: people in financial distress. Poverty as a system is prevalent throughout the US, and 44 million people fall under that threshold. We can see this in our local conversations about homelessness and food insecurity, which have been pushed to the foreground

Percentage of homeless people in unsheltered locations, 2016



QUICK FACTS

Los Angeles is the homeless capital of the nation. And the number one reason for homelessness is loss of a job.

The number of homeless people in Los Angeles has jumped to a new record. Municipal leaders found that in 2017, 557,794 homeless people were living in LA, up more than 23% from last year.

From 1990 to 2015, the poverty rate in Los Angeles County has increased from 15% to nearly 18%.

Los Angeles County has the largest food insecure population in the US.

A study in 2016 showed that in the US, the richest 1 percent of men lives 14.6 years longer on average than the poorest percent of men, while among women in those wealth percentiles, the difference is 10.1 years on average.

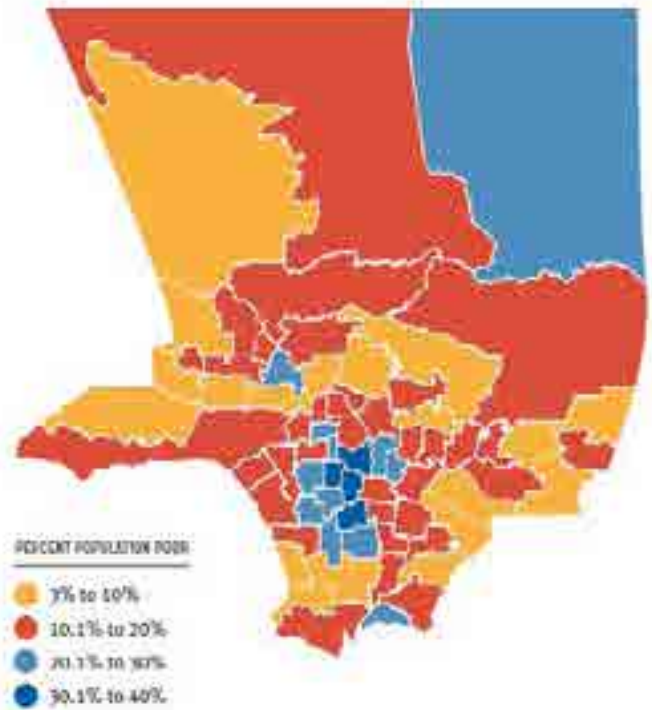
of the ongoing public debate. When the percentage of people falling below the poverty threshold rises, other factors come into play. For example, homelessness, food insecurity, and shorter life expectancy.

THE ANAHEIM STORY

Anaheim declared a state of emergency in September 2017 in response to homelessness in their city, specifically the encampments that line the Santa Ana River. Orange County had a total homeless count of 4,792 in 2017, which was a 5% increase from 2016. Compare this to LA County, whose homeless population skyrocketed from 46,874 in 2016 to 57,794 in 2017, a 23% increase (2017 Greater Los Angeles Homeless Count—Data



POVERTY IN LOS ANGELES COUNTY



Summary—Los Angeles County). This count leaves out Pasadena itself, which had a homeless population of 575 in 2017. That is down 53% from 2011, but up 8% from 2016. Though homelessness is proliferating through our surrounding communities, city initiatives have in part alleviated some of the problem. Pasadena has a “housing first” model; homeless individuals are housed as quickly as possible and then provided with support services to help them remain in housing (Jacobsen, Housing First).

“Will you decide what men shall live, what men shall die?”

This approach is predicated upon the idea that housing is a basic human right (Vitalicio and Cross), and that once people are housed they can address issues surrounding health and drug abuse. Although this philosophy has dramatically changed the homeless population in Pasadena, Los Angeles city has not produced the same results. Los Angeles city saw their homeless population increase from 28,464 in 2016 to 34,189 in 2017. So, what’s different? In part, lack of adequate shelters, as many have closed in the L.A. area over the years due to the added costs of providing more services (Smith, Q&A: Demystifying L.A.’s system of homeless shelters). We may see LA City and County decrease their homeless population through funds provided by City Measure HHH

and County Measure H, but that remains to be seen as the legislation goes into effect.

FOOD INSECURITY

Another consequence of poverty is food insecurity, or, in layman’s terms, people not having enough to eat. LA had 1.5 million people in food insecure houses in 2016, 12% of whom lived above the poverty threshold. Many of these households are not eligible to apply for benefits like SNAP because they don’t fall under the poverty guideline, yet are still suffering with food insecurity. Luckily, we are seeing practical applications to try and solve this. UC Irvine, in response to growing food insecurity among its student population, recently opened up a food pantry for those less advantaged. In a UC wide survey, they found that 4 in 10 students do not have access to a consistent source of high quality food, one third had difficulty studying due to hunger, and one fourth had to choose between paying for food and educational expense and housing (Watanabe). To help solve this problem, students are allowed to take two bags of groceries home per week after determining they understand what food insecurity is and that it is meant for students who cannot afford meals. Though this is a recently opened project, we will see how it helps alleviate food insecurity and how we can apply it to our various communities.

LIFE EXPECTANCY

Finally, short life-expectancy can be attributed to poverty. An effect that still prevails today as it did in Dickensian times. In a study done by Michael Stephner

AROUND LOS ANGELES

- LA County has a population of over 10 million residents. This would make us the ninth largest state in the US. (LAEDC)
- The median age in L.A. County is 35 years old, which makes us slightly younger than the country as a whole.
- According to the US Census... Latinx are the largest ethnic group with 48.5%. 26% are White (non Hispanic/Latinx, 15% of us are Asian/ Pacific Islanders, and 9% of us are Black.
- In 2015, the county's Gross Domestic Product (GDP) was \$664.2 billion, making it a larger economy than 44 states and all but 20 countries. (County of LA Comprehensive Annual Financial Report)
- Los Angeles is the nation's 4th largest economy
- 17.3% of people in LA County are living in poverty, defined as an income of \$22,000 per year for a family of 4, compared to 14% for the nation.
- Nearly 30% of our full-time workers earn less than \$25,000 a year.
- We have 268,000 millionaires and 1.8 million low income people.
- Nearly 4 in 10 poor people in L.A. County suffer extreme poverty. Over 570,000 people in L.A. County live in extreme poverty, defined as living on less than \$5,400 a year for a single person, or about \$11,000 for a family of four.
- We are the homeless capital of the nation. And the number one reason for homelessness is loss of a job.
- The poverty rate for Latino children (31.6%) was more than double that of Asian American (13.5%) and white (11.9%) children in California in 2014. The poverty rate among African American children was also high (19.0%). Children under 5 had somewhat higher poverty rates than older children (23.6% vs. 22.8%).
- According to Public Policy Institute of California, in 2014, 81.8% of poor children in California lived in families with at least one working adult. Three-fifths of poor children (60.8%) lived in families with at least one full-time worker, and an additional fifth (20.9%) had at least one adult in the family working part-time.



Our percentage of "working poor" is higher than in the U.S. as a whole.

- From 2000 to 2008, the number of those considered working poor (Household Income under \$44K for a family of four) was nearly 6 percentage points higher than the state as a whole, and 7.5 percentage points higher than the nation.

Not all job loss was the result of the recession. Over the course of the decade, slow steady attrition of jobs occurred in several key industries.

- Manufacturing showed the greatest decline (-36%) followed by the Information sector (Publishing, Movies, TV, Radio) with a 16% drop.
- Transportation and Utilities declined by almost 12%.

However, certain industries did show growth.

- Educational and Health Services grew by 27% followed by Leisure and Hospitality with a 14% increase.

Source

According to the United Way's 2010 study, "L.A. County 10 Years Later: A Tale of Two Cities, One Future"

www.unitedwayla.org/wp-content/uploads/2011/11/TaleOfTwoCities_Feb2010.pdf

Bohn, Sarah, and Caroline Danielson. "Child Poverty in California." PPIC, www.ppic.org/publication/child-poverty-in-california/.

Holland, Gale. "L.A. Tallies Its Homeless Population amid Concern about Rising Encampments." Los Angeles Times, Los Angeles Times, 27 Jan. 2017, www.latimes.com/local/lanow/la-me-ln-homeless-count-20170127-story.html.

Sheffield, Rachel. "Understanding Poverty in the United States: Surprising Facts About America's Poor." The Heritage Foundation, www.heritage.org/poverty-and-inequality/report/understanding-poverty-the-united-states-surprising-facts-about.

Jessica L. Semega, Kayla R. Fontenot, and Melissa A. Kollar. "Library." Income and Poverty in the United States: 2016, 12 Sept. 2017, www.census.gov/library/publications/2017/demo/p60-259.html.



Currency & Wealth

By Jessica Hutchinson

"GUINEAS, SHILLINGS, half-pence. You know what they are?" Mr. Dombey asks his little son Paul in Dickens' novel, *Dombey and Son* (1847). Paul, Dickens tells us, knew, but the average reader of today is not always likely to be so knowledgeable.

BASIC UNITS	Value	Coin	Paper	Slang Term
	1,000 pounds		1,000-pound note	
	500 pounds		500-pound note	
	200 pounds		200-pound note	
	100 pounds		100-pound note	
	50 pounds		50-pound note	
	20 pounds		20-pound note	
	10 pounds		10-pound note	tenner
	5 pounds		5-pound note	fiver
One Pound	21 shillings	guinea		
	20 shillings	sovereign	1-pound note	quid
	10 shillings	half sovereign	½-pound note	
	5 shillings	crown		bull
	2½ shillings	half crown	half a crown	
One Shilling	2 shillings	florin		
	12 pence	shilling		bob, bog
	6 pence	sixpence		tanner, bender
	4 pence	groat		
	3 pence	threepence		thruppence
	2 pence	twopence		tuppence
	1 pence	penny		copper
	½ pence	halfpenny		ha'pence
¼ pence	farthing			
¼ pence	half farthing			

Rough monetary values and terms in Dickens' time.

In the 1800s, British money was calculated in units of pounds, shillings, and pence. These were the units of value—like the American mill, cent, and dollar—in which all transactions were reckoned, regardless of whether the value was represented by a bookkeeping entry, by coin, by bank notes, or by notations written on a check. The actual physical instruments of currency were paper bank notes and gold, silver, copper, and bronze coins like the sixpence, the crown, the sovereign, the shilling piece, and the penny. Thus, for example, the physical units called pennies were used to measure the value created by an equivalent number of pence. (The guinea, uniquely, was a unit of physical currency that also became an abstract measure of value as well; that is, long after the actual guinea coin itself stopped being minted in the early 1800s, prices for luxury items like good horses and expensive clothes continued to be quoted in guineas as if it were some independent unit of value like the pound.)

Sovereigns and half sovereigns were gold; crowns, half crowns, florins, shillings, sixpences, and threepences were silver; pence, ha'pence, and farthings were

copper until 1860, after which they were bronze. The coins were issued by the Royal Mint, but the bank notes got their names from the fact that they were not issued by a government agency but by a bank, in fact—after the mid-1800s—only by the bank—the Bank of England. Until then banks all over the country issued their own bank notes (or promises to pay), which circulated more or less like money. Private banks in the provinces are by one estimate believed to have cranked out about £20,000,000 worth of notes between 1810 and 1815. With the Bank Charter Act of 1844, however, the government

gave the Bank of England a monopoly on the issuance of bank notes. As the currency of other banks subsequently disappeared from circulation, “bank note” or “note” in consequence became synonymous with the paper issued by the Bank of England.

To abbreviate their money, Britons used the symbol £ for pound, s. for shilling, and d. for pence, although five pounds, ten shillings, sixpence could be written £5.10.6. “Five and six” meant five shillings and sixpence, and it would have been written “5/6.”

It is very difficult to know what a pound or shilling from 1800 to 1859 is worth in American currency today, and, as any economist will volubly inform you, the fact that the Victorians had no Hondas and we have no candles, i.e., we don’t buy the same goods and don’t have the same economic needs, makes the purchasing power of the two currencies fundamentally incommensurable. Nonetheless, intrepid estimates have put the pound’s worth in the neighborhood of \$20, \$50 or \$200.

Being Wealthy

What did it mean to be wealthy in the days before tax shelters, credit cards, junk bonds, and golden parachutes? No stocks and bonds, no money market funds—what did you put your money into? First and foremost, it went into land. Land was socially prestigious and it also produced rent from tenant farmers that was probably the major source of income for most of the landed gentry and nobility during much of the 1800s. Good land, however, was not likely to be easily attainable. Much of it was tied up through entail in family estates, and it was an extremely complicated and expensive procedure to purchase it. A contemporary observer toward the end of the century said the legal fees involved were enormous and also pointed out that by then the 2 percent return on land made it a bad investment unless you didn’t need a big income. In families, land always went to the men, while the women got things like government securities...

It may well be asked—what about taxes? When the young visitors are shown around Sotherton in Jane Austen’s novel, *Mansfield Park*, the author comments at one point that they were not shown the chapel until after “having visited many more rooms than could be supposed to be of any other use than to contribute to the window tax.” It is a passing remark; but one that gives a small glimpse of the remarkably extensive system of taxation that must have made the English one of the most taxed

peoples in the world. During the nineteenth century, for example, there was a tax on land, income, the practice of law, newspaper advertisements, glass, candles, beer, malt, carriages, menservants, coats of arms, newspapers, paper, bricks, stone, coal, windows, corn, soap, horses, dogs, salt, sugar, raisins, tea, coffee, tobacco, playing cards, timber, and silk—but the extent of the taxation begins to become clear. There was even a tax on headgear, which, after Wordsworth was appointed as a collector of stamp duties, moved Byron to write: “I shall think of him often when I buy a new hat. There his works will appear.”

The taxes were important not only because of the bite they put on people but because of their individual social consequences. Until repealed in 1861, for example, the tax on paper helped to keep books scarce and expensive. Soap was taxed until 1853 with the consequence of the poor personal hygiene which may have contributed to some of the epidemics of typhus and other diseases that periodically devastated elements of the population. (In fact, a black market sprang up in soap, and it was smuggled in from Ireland, where there was no tax, to the western shore of England.) The tax on windows mentioned in *Mansfield Park* was perhaps the most pernicious one, since even a hole cut in a wall for ventilation was counted as a window, making, among other things, for dark houses for the poor. The fact that a family was taxed £2 8s. for each male servant in 1812 (bachelors £4 8s.) helped to steer people toward womenservants — both this and the tax on carriages were based on the government’s (correct) assumption that these were two of the leading ways to get revenues from the wealthy.

And these were only the national taxes. At a local parish level from the 1800s on, one could be required to pay a “rate” for the maintenance of the poor (one reason why people were always anxious to have the poor settle somewhere else besides their parish), to which, in due course, were added rates for highways and other local expenses. There was also a local church rate for the physical upkeep of the local Church of England house of worship until 1868. To the national taxes and this local tax must then be added the tithes which farmers and craftsmen had to pay the local clergyman in support of the Church of England. These amounted to one-tenth of the value of the year’s annual produce and, until 1840, also had to be paid in kind, when it was “commuted” to payment in money. ❖

Source: Goodman Theatre — www.goodmantheatre.org

ABOUT: **SCENIC DESIGN** | BY JEANINE A. RINGER

WHEN I FIRST approach designing a new show, I always try to find initial inspiration in the text. As I read the script for the first time, I jot down any imagery or words that pop out at me. Then, I attempt to find interesting visual research to accompany it.

Next, I typically meet with the director; in this show's case, the directors: Geoff Elliot and Julia Elliot-Rodriguez. Geoff and Julia provided me with some of their visual research, which, coupled with my own research, led to some very interesting choices.

There are three different urban worlds in *A Christmas Carol*: the past, the present, and the future. One of the main challenges was visually defining Scrooge's three worlds. As I moved forward with my designs, I found a link between trees and their cyclical lives. You will see an overriding theme of rebirth in this production, and trees and their branches also play a central visual theme.

We begin in the present, which I view as a very de-saturated, stripped away world. Scrooge himself is in a winter stasis, like a tree without leaves: cold, brittle, scary, and seemingly dead. Take note of the overcast, greyscale color palette in these scenes.

The past is definitely a much brighter and colorful place for Scrooge. His memory is visually depicted in a grander scale—magnified and vivid.

The future I laid out is not a place that many of us would wish to visit. It is a very dark, almost grotesque place. In the end, however, Scrooge's present world blooms once again, much like a tree in the Spring. ❖



Ms. Ringer has spent the last decade working in television, film, theater, and other live events. She received her MFA from the University of California, Irvine. There, she took a particular interest in immersive theater, where the scenic environment completely surrounds the audience, and provides the spectator with an opportunity to interact with the production. From there, she went on to work in film and television both as a Production Designer and as a Stylist/Dresser. She has since had opportunities to work on multiple theatrical productions, films, commercials, music videos, and live events. *A Christmas Carol* was Ms. Ringer's first production with A Noise Within, which was shown during the 2010-2011 Season. Since then she has worked as a Scenic Designer on numerous A Noise Within productions including: *Figaro*, *The Importance of Being Earnest*, *Endgame*, *Pericles*, *Prince of Tyre*, and *Eurydice*.
www.jnicholasdesigns.com

ABOUT: **COSTUME DESIGN** | BY ANGELA BALOGH CALIN

A CHRISTMAS CAROL is a favored tale produced by many theatres during the holiday season. Many productions stay true to Charles Dickens' original story and time-period, but our production here at A Noise Within attempts to change things up a bit, particularly in our distinctive choices in defining the past, present, and future worlds.

This might sound strange, but the costume design concept all started with an image of an oversized hat. Then, it snowballed into defining the past through the eyes of a child. When you are a small child, everything seems bigger; it is a time of wonder, and a time of laughter. In *A Christmas Carol*, The Ghost of Christmas Past whisks Scrooge to various scenes from his childhood. I view it as a very romantic, idyllic place, and the Ghost herself appears this way in her white, flowing robe. I also incorporated flowery imagery into the costumes, and you will find an oversized hat, large wigs, and other elements to create a fanciful past.

The present is one world where we opted to stay true to the Victorian time-period. Costumes are realistic in form and in scale. Ebenezer Scrooge himself is drab, but surprisingly, the other characters in the present appear in warm, earthy tones. Fred, Scrooge's nephew, wears rich, jewel tones. The Cratchit Family, who we know is quite poor, is actually the warmest in tone, which reflects their love for each other and belief in the holiday spirit. Even The Ghost of Christmas Present is bright: look for touches from his red costume in the past and future as well.

The future is somber, dark, and nearly apocalyptic. This portion of the show is abstract and very theatrical; color drained from each of the characters. The Ghost of Christmas Yet to Come wears black from head to toe—aside from that one streak of red, which ties this spirit to Scrooge's past and the present worlds.

After viewing *A Christmas Carol*, you will come to understand how my research affected my designs. Costuming research is an exciting journey into the world of the play, and world history in general. I enjoy designing costumes because I discover something with each new play. For my research, I plunge into costume books, fashion books, and, of course, the Internet for inspiration.

The Internet is a great tool for easily referencing costume ideas as well as the vast quantity of readily available information. The only problem is combing through it all. It is very time consuming. However, searching the Internet is always worth it because I typically find interesting images that are extremely useful to my research. I never know what will inspire me: street scenes, candid shots, a runway fashion show, or something as basic as patterns and textures. ❖

Angela Balogh Calin ANW Resident Artist. AT A NOISE WITHIN: 2018-19 Season: Costume Design: *Man of La Mancha* Previous Seasons: Set Design: *The Madwoman of Chaillot; The Imaginary Invalid; Romeo and Juliet; The Dance of Death; Ghosts; The School For Wives; Julius Caesar; The Seagull; The Winter's Tale; As You Like It; Twelfth Night; Cyrano de Bergerac (1995); The Country Wife* Costume Design: *Noises Off; Henry V; The Madwoman of Chaillot; A Christmas Carol; Man of La Mancha (2017); King Lear; The Maids; The Imaginary Invalid; You Never Can Tell; Romeo and Juliet; A Flea in Her Ear; Julius Caesar; Figaro; The Threepenny Opera; The Dance of Death; The Tempest; Tartuffe; Pericles, Prince of Tyre; The Beaux' Stratagem; A Christmas Carol; Cymbeline; The Bungler; Antony and Cleopatra; Twelfth Night, or What You Will; The Comedy of Errors; The Chairs; Great Expectations; Waiting for Godot; Loot; As You Like It; A Midsummer Night's Dream* at The Hollywood Bowl and at ANW among others **OTHER THEATRES: South Coast Repertory, Pasadena Playhouse, Denver Center Theatre, The Old Globe, Laguna Playhouse, West Coast Ensemble, Milwaukee Rep., Georgia Shakespeare, Chautauqua Theatre Co., Ensemble Theatre Co., Antaeus Theatre, The Alliance Theatre, among others **FILM/TV:** 16 productions with I.R.S. Media, PBS, Full Moon Productions, Moviestore Entertainment, Romanian Films **EDUCATION/TRAINING:** MFA, Set and Costume Design—The Academy of Fine Arts (Bucharest, Romania). Member of the Costume Designers Guild in the USA and Romania**

A CHRISTMAS CAROL **OVERALL DESIGN CONCEPT**

Images by Spanish photographer, Eugenio Recuenco, caught the eyes of *A Christmas Carol's* Co-Directors, Geoff Elliott and Julia Rodriguez-Elliott. Recuenco's "cinematic" and "pictorial" photos are featured in many fashion magazine editorials and advertisements. His photos, some of which are pictured here, inspired the overall design concept for Ebenezer Scrooge's uncertain FUTURE...

For more with Eugenio Recuenco, visit eugeniorecuenco.com/



PRE-SHOW PREPARATION: DISCUSSION POINTS & ESSAY TOPICS

MANY OF YOU are already familiar with Charles Dickens' story. Perhaps you have seen another stage production, or viewed the classic film versions of *A Christmas Carol* (1938) and *Scrooge* (1951) on television. Mickey Mouse, the Muppets, and the Looney Toons took their stabs at Dickens' story. Various films like *It's A Wonderful Life* (1946), *Scrooged* (1988), and *Disney's A Christmas Carol* (2009) also draw basic plot points from

A Christmas Carol to serve as inspiration, and you'll notice countless TV shows do the same thing right around the holiday season. All of these productions speak to the spirit of Christmas, family values, holiday traditions, etc.

After viewing our version of *A Christmas Carol* here at A Noise Within, test out some of these discussion points, writing activities, or artistic endeavors:

Discussion Points:

1. How did you feel about the characters in the story, and the way the ANW actors portrayed them?
2. How did ANW portray the past, the present, and the future in regards to their scenic, costume, and sound & music designs?
3. How do you think Scrooge wound up the way he did?
4. Would Scrooge have changed his ways without the visits from Jacob Marley and the three spirits?
5. If you or a spirit had the ability, would you desire a glimpse into your future, or would you prefer to wait for it to happen?
6. If you possessed wealth and power like Ebenezer Scrooge, would you behave that way, too? What would you do with the money, and how would you treat your employees?
7. Charles Dickens wrote "for change." Can you think of any other authors we study in class that also carry this same philosophy (novelists, essayists, playwrights, etc.)?

Essay Topics

1. Read Dickens' original novel (free download available at: <http://www.gutenberg.org/ebooks/46>) As a class, discuss the similarities and differences between Dickens' story and our ANW production, and write a brief essay to compare and contrast.
2. You have all the money in the world, just like Ebenezer Scrooge. Research various charities and non-profit organizations in the Los Angeles area, and write a brief essay on why you would support them.
3. It may come as no surprise to you that many Angelinos are preoccupied with money and material objects (clothes, cars, electronics, etc.). Do we, as a segment of society, need to change our opinions about the importance of money? Why or why not?
4. Read Charles Dickens' biography and timeline (included in this Study Guide). How do you feel Dickens' childhood affected his writing and activities as an adult? Next, write a short essay about your own childhood, and how it affects what you believe in, how you behave, and what activities you partake in today (i.e. creative writing, acting, volunteer work, etc.).
5. Put yourself in Scrooge's shoes: spirits whisk you away to view your past, your present, and your supposed future. What important moments would this ghost take you to see? How would you feel about seeing these things? Would you change anything in the present that would affect your future? Why or why not?

A Noise Within has developed these activities according to The Common Core State Standards for Language, Reading, Speaking, Listening and Writing at the 9th grade level and the 21st Century Learning and Thinking Skills.

PRE-SHOW PREPARATION: **ACTIVITIES**

Art Imitates Life:

The Industrial Revolution vs Today in LA

- Child Labor
- Environment
- Housing
- Gender Roles
- Literacy
- Organization of Labor/The Economy

Grab a partner and explore one aspect of the Industrial Revolution from the list above.

One of you must research the effect your topic had on society during London's Industrial Revolution, and the other must research the issue and its current impact on Los Angeles.

Next, work together to create a collage/piece of visual artwork that summarizes your findings. Or, write a short play, poem, story, or song to depict your findings, and present it to the class.

What if....?

Ask your students to imagine what if!

- What if Scrooge didn't change after all the ghosts came?
- What if the ghosts were different?
- What if Scrooge had chosen Belle all those years ago?

Have them write and perform the various outcomes!

Character Building

Have each student choose a character to embody. They must work on posture, gestures, and facial expressions to become these characters—no words! Have them interact with each other silently in character.

Re-Set It!

A Christmas Carol has been reimaged in a million different ways. Now is the chance for your students to do it how they want to! Have them design sets, costumes and music for how and where they would like to see *A Christmas Carol*. Maybe they do it in the 60's, maybe today, maybe in Ancient Egypt...the possibilities are endless!



Old Fezziwig from *A Christmas Carol*

ADDITIONAL RESOURCES

BOOKS

- Ackroyd, Peter. *Dickens: A Biography*. New York: HarperCollins, 1990.
- Bloom, Harold. *Charles Dickens*. New York: Chelsea House, 1987.
- Dickens, Charles. *The Letters of Charles Dickens*. General eds. Madeline House, Graham Storey, and Kathleen Tillotson. 12 vols. Oxford: Clarendon P, 1965 - 2002.
- Douglas-Fairhurst, Robert. *Becoming Dickens: The Invention of a Novelist*. Harvard U. Press. 2011.
- Epstein, Norrie. *The Friendly Dickens: Being a Good Natured Guide to the Art and Adventures of the Man who Invented Scrooge*. New York: Penguin Books, 2001.
- Slater, Michael. *Charles Dickens: A Life Defined by Writing*. New Haven: Yale U. Press, 2009.
- Standiford, Les. *The Man Who Invented Christmas: How Charles Dickens's a Christmas Carol Rescued His Career and Revived Our Holiday Spirits*. New York: Broadway Paperbacks, 2008.
- Tomalin, Claire. *Charles Dickens: A Life*. Penguin, 2011.

FREE E-BOOKS

- **Dickens' Original A Christmas Carol Manuscript:** <http://www.themorgan.org/collections/works/dickens/ChristmasCarol/1>
- **Dickens' A Christmas Carol (various formats):** <http://www.gutenberg.org/ebooks/46>

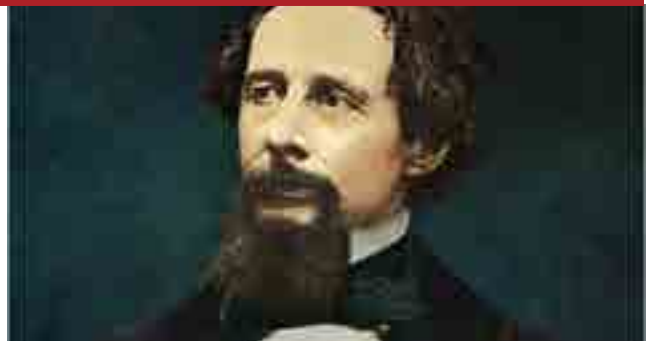
FILMS

- **A Christmas Carol**. Dir. Hugh Harman. With Reginald Owen and Gene Lockhart. 1938.
- **A Christmas Carol** (also known as **Scrooge**). Dir. Brian Desmond Hurst. With Alastair Sim and Mervyn Johns. 1951.

WEBSITES

- **The Dickens Project** (UC Santa Cruz): <http://dickens.ucsc.edu/>
- **David Purdue's Charles Dickens Page:** <http://charlesdickenspage.com/index.html>
- **Charles Dickens Museum, London:** <http://www.dickensmuseum.com/>
- **PBS Dickens Page:** <http://www.pbs.org/wnet/dickens/life.html>
- **Victorian Web Dickens Page:** <http://www.victorianweb.org/authors/dickens/index.html>

Project Gutenberg's
Free Download —
Dickens' Original
A Christmas Carol



<http://www.gutenberg.org/ebooks/46>

ABOUT THEATRE ARTS: **KEY THEATRICAL TERMS**

Today, movies and television take audiences away from what was once the number one form of amusement: going to the theatre. But attending a live theatrical performance is still one of the most thrilling and active forms of entertainment.

In a theatre, observers are catapulted into the action, especially at an intimate venue like *A Noise Within*, whose thrust stage reaches out into the audience and whose actors can see, hear, and feel the response of the crowd.

Although playhouses in the past could sometimes be rowdy, participating in the performance by giving respect and attention to the actors is the most appropriate behavior at a theatrical performance today. Shouting out (or even whispering) can be heard throughout the auditorium, as can rustling paper or ringing phones.

After this *A Noise Within* performance, you will have the opportunity to discuss the play's content and style with the performing artists and directors. You may wish to remind students to observe the performance carefully or to compile questions ahead of time so they are prepared to participate in the discussion.

blocking: The instructions a director gives the actors that tell them how and where to move in relation to each other or to the set in a particular scene.

character: The personality or part portrayed by an actor on stage.

conflict: The opposition of people or forces which causes the play's rising action.

dramatic irony: A dramatic technique used by a writer in which a character is unaware of something the audience knows.

genre: Literally, "kind" or "type." In literary terms, genre refers to the main types of literary form, principally comedy and tragedy. It can also refer to forms that are more specific to a given historical era, such as the revenge tragedy, or to more specific sub-genres of tragedy and comedy such as the comedy of manners, farce or social drama.

motivation: The situation or mood which initiates an action. Actors often look for their "motivation" when they try to dissect how a character thinks or acts.

props: Items carried on stage by an actor to represent objects mentioned in or implied by the script. Sometimes the props are actual, sometimes they are manufactured in the theatre shop.

proscenium stage: There is usually a front curtain on a proscenium stage. The audience views the play from the front through a "frame" called the proscenium arch. In this scenario, all audience members have the same view of the actors.

set: The physical world created on stage in which the action of the play takes place.

setting: The environment in which a play takes place. It may include the historical period as well as the physical space.

stage areas: The stage is divided into areas to help the director to note where action will take place. Upstage is the area furthest from the audience. Downstage is the area closest to the audience. Center stage defines the middle of the playing space. Stage left is the actor's left as he faces the audience. Stage right is the actor's right as he faces the audience.

theme: The overarching message or main idea of a literary or dramatic work. A recurring idea in a play or story.

thrust stage: A stage that juts out into the audience seating area so that patrons are seated on three sides. In this scenario, audience members see the play from varying viewpoints. *A Noise Within* features a thrust stage.

ABOUT A NOISE WITHIN

A NOISE WITHIN produces classic theatre as an essential means to enrich our community by embracing universal human experiences, expanding personal awareness, and challenging individual perspectives. Our company of resident and guest artists performing in rotating repertory immerses student and general audiences in timeless, epic stories in an intimate setting.

Our most successful art asks our community to question beliefs, focus on relationships, and develop self-awareness. Southern California audiences of all ages and backgrounds build community together while engaging with this most visceral and primal of storytelling techniques. ANW's production of classic theatre includes all plays we believe will be part of our cultural legacy. We interpret these stories through the work of a professional resident company—a group of artists whose work is critical to their community—based on the belief that trust among artists and between artists and audience can only be built through an honest and continuing dialogue. Our plays will be performed in rotating repertory, sometimes simultaneously in multiple spaces, and buttressed by meaningful supporting programs to create a symphonic theatrical experience for artists and audience.

In its 27 year history, A Noise Within has garnered over 500 awards and commendations, including the Los Angeles Drama Critics' Circle's revered Polly Warfield Award for Excellence and the coveted Margaret Hartford Award for Sustained Excellence.

More than 40,000 individuals attend productions at a Noise Within annually. In addition, the theatre draws over 16,000 student participants to its arts education program. Students benefit from in-classroom workshops, conservatory training, subsidized tickets to matinee and evening performances, post-performance discussions with artists, and free standards-based study guides. ♦

Study Guides

A Noise Within creates study guides in alignment with core reading, listening, speaking, and performing arts standards to help educators prepare their students for their visit to our theatre. Study guides are available at no extra cost to download through our website: www.anoisewithin.org. The information and activities outlined in these guides are designed to work in compliance with the California VAPA standards, The Common Core, and 21st Century Learning Skills.

Study guides include background information on the plays and playwrights, historical context, textual analysis, in-depth discussion of A Noise Within's artistic interpretation of the work, statements from directors and designers, as well as discussion points and suggested classroom activities. Guides from past seasons are also available to download from the website.

Study Guide Credits

Alicia Green *Education Director and Editor*
 Craig Schwartz *Production Photography*
 Teresa English *Graphic Design*



Geoff Elliott & Julia Rodriguez-Elliott
 Producing Artistic Directors

ADDRESS 3352 E Foothill Blvd
 Pasadena, CA 91107

TEL 626.356.3100

FAX 626.356.3120

EMAIL info@anoisewithin.org

WEB anoisewithin.org